

# SPSS: Cleveland Dot plot (via Chart builder)

---

This document will explain how to generate a Cleveland dot plot using SPSS as shown below.

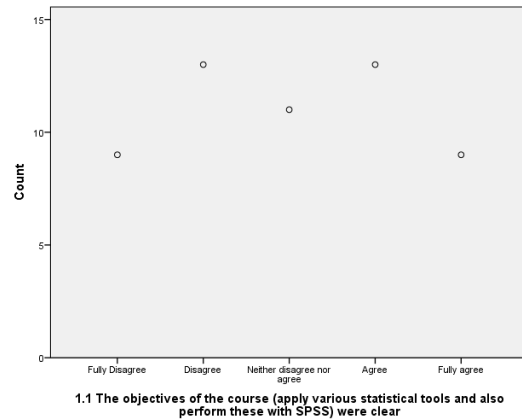


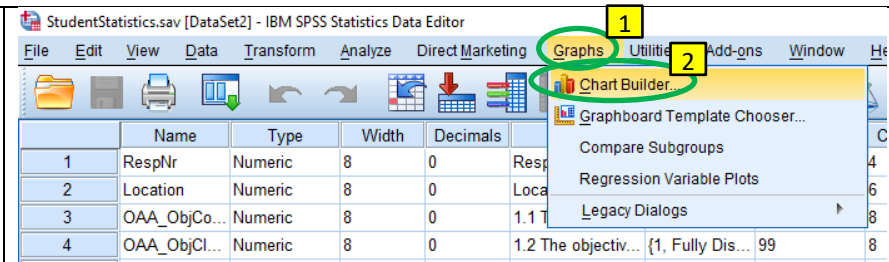
Figure 1. Example Cleveland dot plot generated with SPSS

The described steps are also shown in the Youtube video at: <https://youtu.be/1gpvFizFfec>.

The example file used is *StudentStatistics.sav* available on the companion website <http://PeterStatistics.com>.

## Cleveland Dot plot

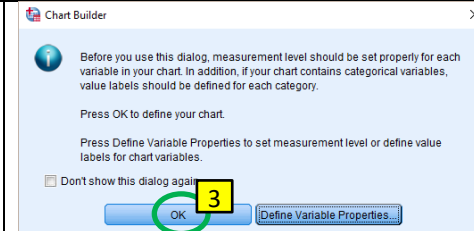
1. Click in the menubar on **Graphs**
2. Click on **Chart Builder...**




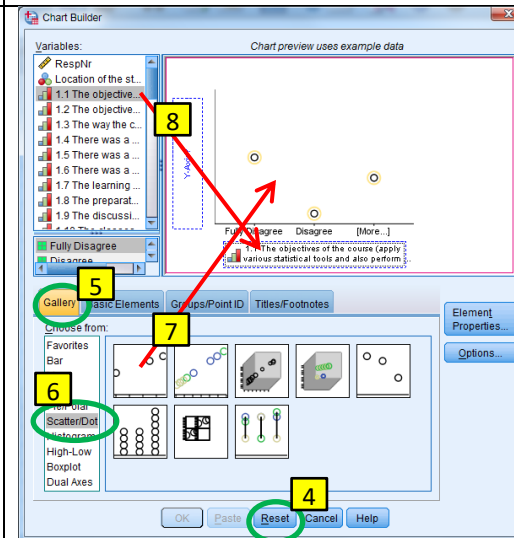
You'll probably get a warning about measurement levels. If you have not set those correct in the Variable View, you might want to do so first.


3. Click on **OK**

*Optional:* You can also tick the option ☐ **Don't show this dialog again**, to prevent this message in the future.




4. Click on **Reset**
5. Click on the tab **Gallery**
6. Click on the category 'Scatter/Dot'
7. **Drag** the 'Simple Scatter'  to the preview area
8. **Drag** the variable of which you want the dot plot to **X-Axis?**



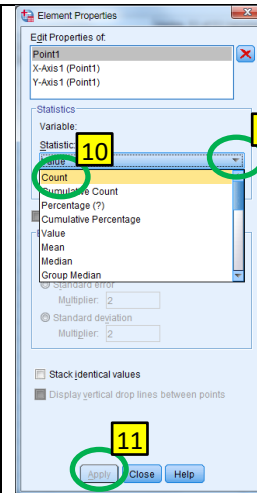
9. In the **Element Properties** screen, click on the pull down button at Statistic  (next to 'Value')

*Note:*

If you do not see the *Element Properties* screen, click on 

10. Klik op 'Count'

11. Click on 



12. Click on 